

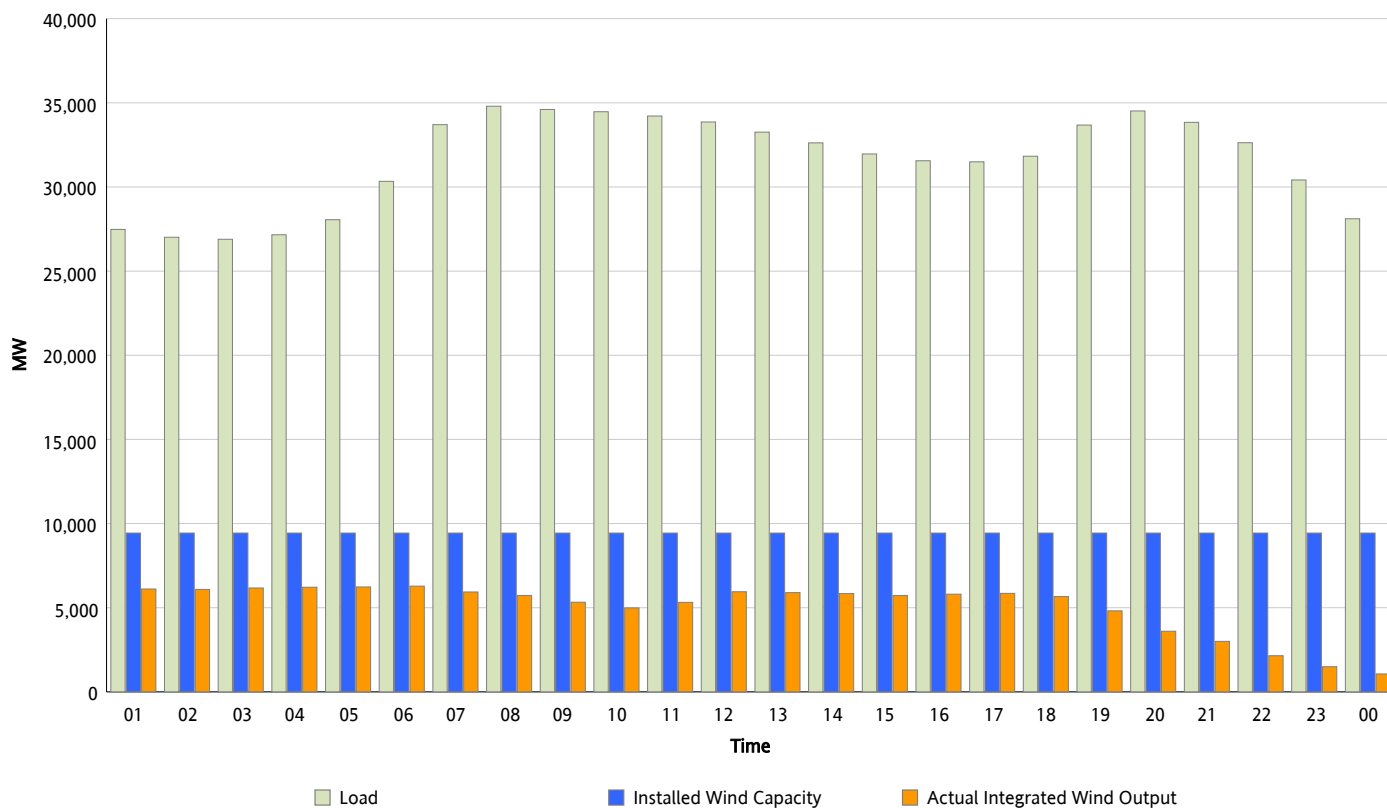


ERCOT Grid Operations

Wind Integration Report : 02/20/2012

Peak Load	34,798 MW
Load Peak Hour (HE)	08
Wind Over Peak	5,731 MW
Wind Record 10/07/11	7,400 MW
Max Wind Value*	6,532 MW
Wind Peak Time	05:04
Wind Integration %	22.36 %

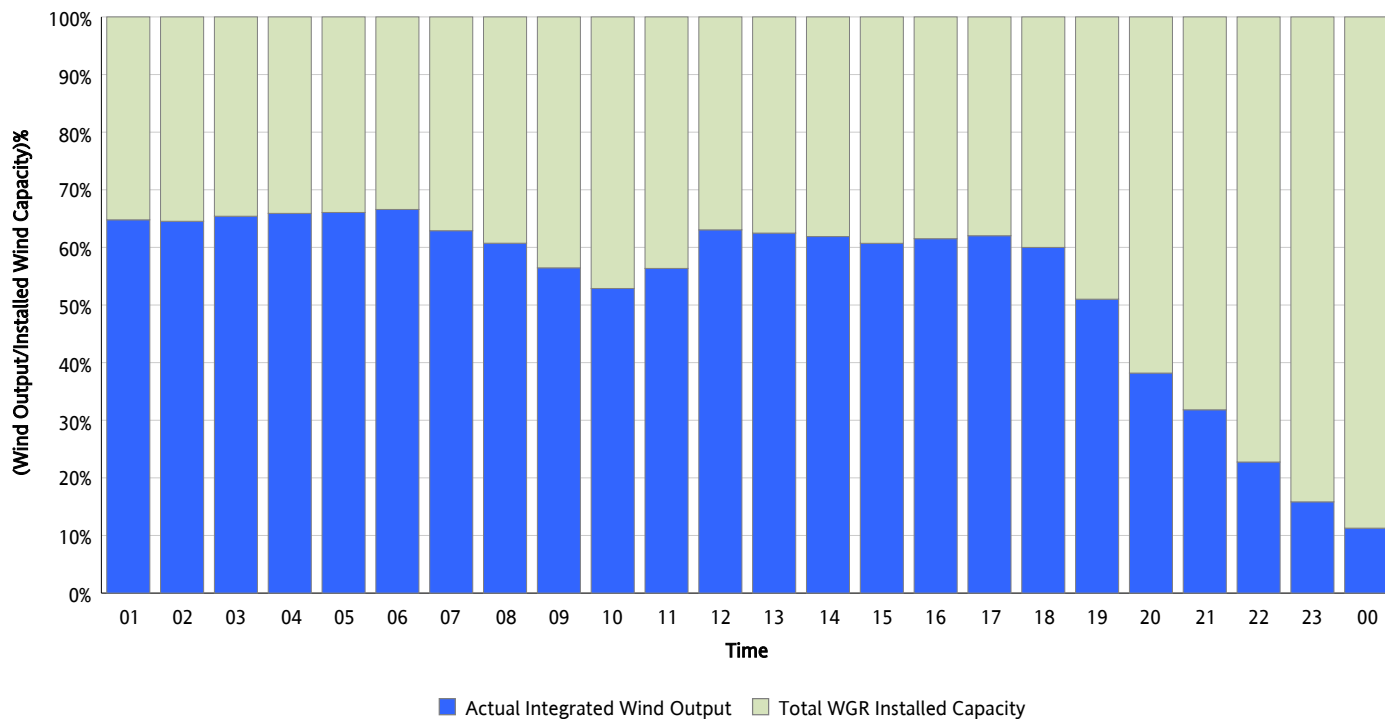
Hourly Average Actual Load vs. Actual Wind Output
02/20/2012



* Wind Max represents the instantaneous value and the rest of the values are integrated over the hour

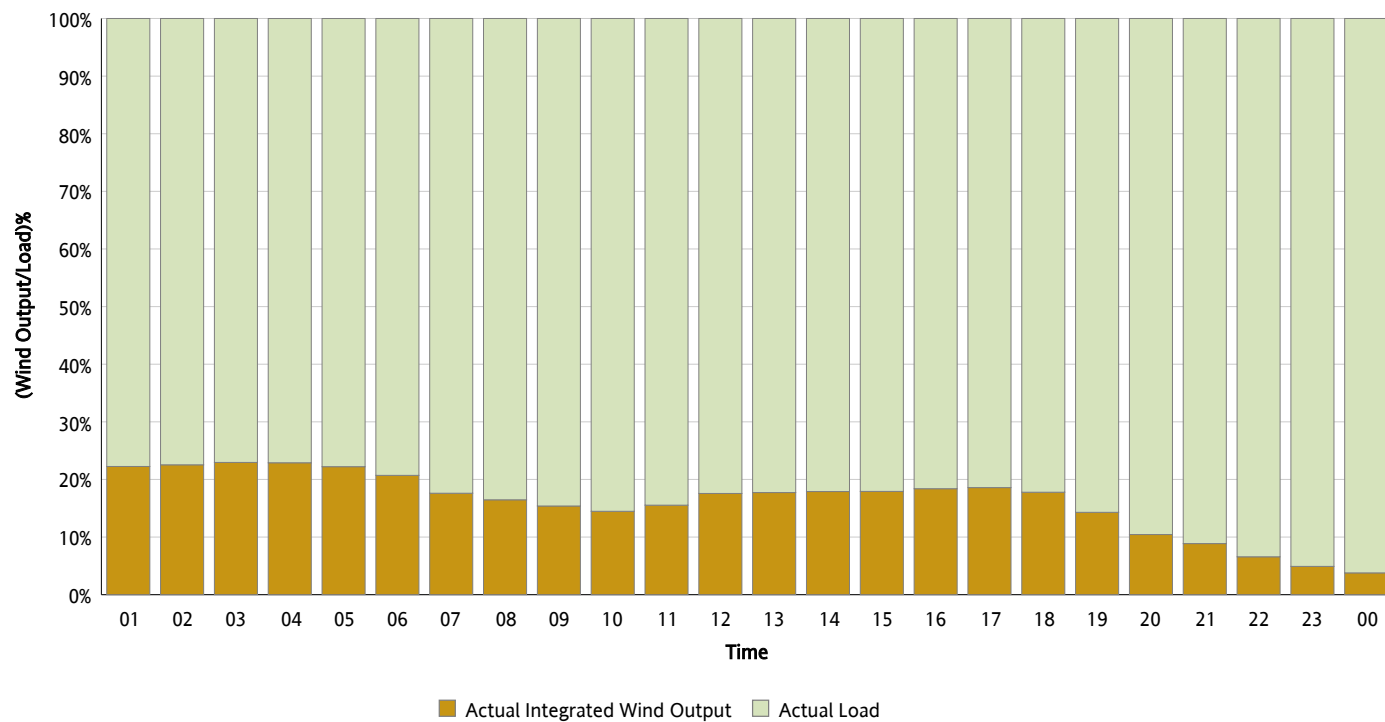
Actual Wind Output as a Percentage of the Total Installed Wind Capacity

02/20/2012



Actual Wind Output as a Percentage of the ERCOT Load

02/20/2012



ERCOT Load vs. Actual Wind Output

02/13/2012 - 02/20/2012

